



HOUSING PROGRAMS

ABOUT LOW RENT PUBLIC HOUSING

- The public housing program was established in 1937 to provide decent and safe rental housing for low-income families funded by the Federal Government.
- The Public Housing Program provides affordable housing to more than 600 residents of the City of Las Cruces.
- A resident's rent in the public housing program is subsidized by the federal government and is usually calculated at 30% of the household's adjusted monthly income. Applicants to the public housing program must be income eligible and residents must adhere to program rules.

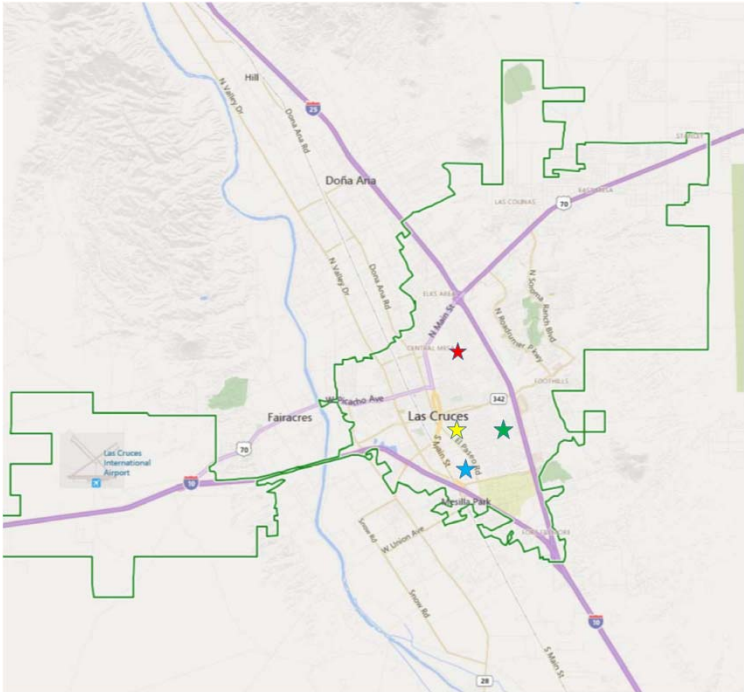


LOW RENT PUBLIC HOUSING

- **MVPHA manages 4 public housing locations with 249 low rent public housing units throughout the City of Las Cruces as follows:**
- **Tres Arboles – 64 units (Multifamily)**
- **San Pedro Place – 38 units (Elderly/Disabled)**
- **Walnut Grove – 100 units (Multifamily)**
- **Jardines Alegres – 47 units (Elderly/Disabled)**



LOW RENT PUBLIC HOUSING PROPERTIES



- ★ TRES ARBOLES
- ★ SAN PEDRO PLACE
- ★ WALNUT GROVE
- ★ JARDINES ALEGRES



Tres Arboles – 1011 Ash Avenue



NO. OF BEDROOMS						
0	1	2	3	4	5	6
0	28	8	22	6	0	0

San Pedro Place – 926 S San Pedro



NO. OF BEDROOMS						
0	1	2	3	4	5	6
22	16	0	0	0	0	0

Walnut Grove – 1091 S Walnut



NO. OF BEDROOMS						
0	1	2	3	4	5	6
0	20	36	20	20	4	0

Jardines Alegres – 1304 Bon Burt Lane



NO. OF BEDROOMS						
0	1	2	3	4	5	6
26	17	4	0	0	0	0

Section 8 Housing Choice Voucher (HCV) Program

- The Housing Choice Voucher (HCV) Program is the federal government's major program for assisting very low-income families, the elderly, and the disabled to afford decent, safe, and sanitary housing in the private market.
- To cover the cost of the program, HUD provides funds to allow Public Housing Authorities (PHAs) to make Housing Assistance Payments (HAPs) on behalf of the families. HUD also pays the PHA a fee for the costs of administering the program (Administrative Fees).



Section 8 Housing Choice Voucher (HCV) Program

- **The MVPHA has been awarded a total of 1,627 vouchers as follows:**
 - **HUD-VASH 55 Vouchers:** The HUD-Veterans Affairs Supportive Housing (HUD-VASH) program combines Housing Choice Voucher (HCV) rental assistance for homeless Veterans with case management and clinical services provided by the Department of Veterans Affairs (VA)
 - **FUP 40 Vouchers:** Family Unification Program (FUP) enables families to rent affordable housing for whom the lack of affordable housing is a primary factor in, (1) the separation of children from their families or (2) in the prevention of reunifying the children with their families.



Section 8 Housing Choice Voucher (HCV) Program

- The MVPHA has been awarded a total of 1,627 vouchers as follows:
 - NED 100 Vouchers: Non-Elderly Disabled (NED) vouchers enable non-elderly disabled families to lease affordable private housing of their choice. Also assist persons with disabilities who often face difficulties in locating suitable and accessible housing.
 - Homeownership 17 Vouchers: Enables very low income families to purchase a home.
 - 1,415 Regular HCV Vouchers



Section Eight New Construction (Multifamily)

- The Section 8 Program was authorized by Congress in 1974 and developed by HUD to provide rental subsidies for eligible tenant families (including single persons) residing in newly constructed, rehabilitated and existing rental and cooperative apartment projects.
- The rents of some of the residential units are subsidized by HUD under the Section 8 New Construction ("New Construction"), Program. All such assistance is "project-based", i.e.; the subsidy is committed by HUD for the assisted units of a particular Mortgaged Property for a contractually determined period.



Section Eight New Construction (Multifamily)

- Jardines Verdes – 40 units located at 1401 Burley Ct.



NO. OF BEDROOMS						
0	1	2	3	4	5	6
0	34	6	0	0	0	0



Section Eight New Construction (Multifamily)



Low Income Housing Tax Credit (LIHTC) Developments

- The MVPHA is the general partner in 8 LIHTC developments with a total of 603 units as follows:
 - Cimmaron I – 60 units; 825 4th Street, Anthony, NM
 - Cimmaron II – 84 units; 825 4th Street, Anthony, NM
 - Desert Palms – 100 units; 2407 W Picacho, Las Cruces, NM
 - Falcon Ridge – 72 units; 20 S Chile Capital St., Hatch, NM
 - Montana Senior Village I – 48 units; 305 E Montana Ave. Las Cruces, NM
 - Montana Senior Village II – 84 units; 355 E Montana Ave. Las Cruces, NM
 - Robledo Ridge – 71 units; 1519 Medina Dr., Las Cruces, NM
 - Stone Mountain – 84 units; 930 E Boutz, Las Cruces, NM



MVPHA – Affordable Housing Properties

- The MVPHA owns three (3) affordable housing properties with a total of 60 units as follows:
 - Almendra Apartments – 18 units; 1420 Almendra, Las Cruces, NM
 - Oak St. Apartments – 22 units; 3350 Oak Street, Las Cruces, NM
 - Pecos Apartments – 20 units; 1310 Pecos, Las Cruces, NM



MVPHA – Affordable Housing Properties

- **Almendra Apartments – 18 units; 1420 Almendra, Las Cruces, NM**



NO. OF BEDROOMS				
0	1	2	3	4
0	5	13	0	0



MVPHA – Affordable Housing Properties

- **Almendra Apartments – 18 units; 1420 Almendra, Las Cruces, NM**



MVPHA – Affordable Housing Properties

- **Oak St. Apartments – 22 units; 3350 Oak Street, Las Cruces, NM**



NO. OF BEDROOMS				
0	1	2	3	4
0	22	0	0	0



MVPHA – Affordable Housing Properties

- **Oak St. Apartments – 22 units; 3350 Oak Street, Las Cruces, NM**



MVPHA – Affordable Housing Properties

- Pecos Apartments – 20 units; 1310 Pecos, Las Cruces, NM



MVPHA – Affordable Housing Properties

- Pecos Apartments – 20 units; 1310 Pecos, Las Cruces, NM

